

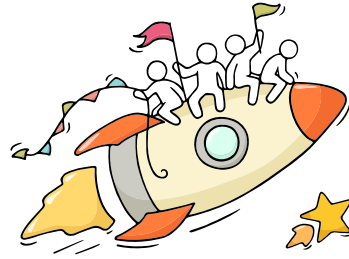


2025 GCE O-LEVEL EXAMINATION RESULTS RELEASE

14 January 2026



Celebrate Efforts!



- The O-Level is a culmination of years of hard work and perseverance.
- You have worked hard to reach this stage. Let's celebrate our efforts.



EXPLORE OPPORTUNITIES!

Remember that while **everyone's educational journey is different,**
we can each have a fulfilling outcome!

Stop

- Calm yourself down. Take a few deep breaths.

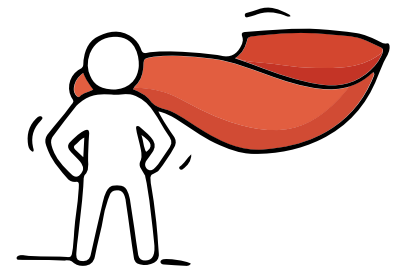
Think

- What are your strengths, interests and types of jobs you are interested?
- What are the courses I can take to prepare for these jobs?

Do

- How should I **make best use of all my 12 choices!**
- What happens if I do not receive a posting?
- Have conversations with trusted adults who know you well to advise and guide you (parents, teachers, ECG Counsellor).

Managing your emotions well will allow you to stay calm and make rational decisions.



Many pathways, Many opportunities!

Support is readily available for you.

There are other hotlines and chats available if you are more comfortable seeking help using these platforms.

These can also be found in the infographic which you accessed earlier.



SOS provides round-the-clock emotional support for those in distress, thinking of suicide or affected by suicide.

Call: **1767**
(24-hour helpline)

Whatsapp: **9151 1767**
(24-hour Care Text)

Community Health Assessment Team (CHAT) provides personalised and confidential mental health checks and consultation for youths. To speak with a youth support worker, you can:

Visit: **CHAT Hub at *Scape, 2 Orchard Link, #04-01A**

Call: **6493 6500/ 6501**

Email: **CHAT@mentalhealth.sg**

mindline.sg is an online platform that provides tools, tips and resources to help you manage your health and well-being. Find out more at:
www.mindline.sg



TOUCHline is a helpline to provide youths with emotional support and practical advice.

Call: **1800-377 2252**

*Monday- Friday (Excluding Public Holidays):
9am – 6pm*

Carey is an online platform by Care Corner that provides free mental health check-ins with mental health professionals. Find out more at:
<https://carey.carecorner.org.sg/>

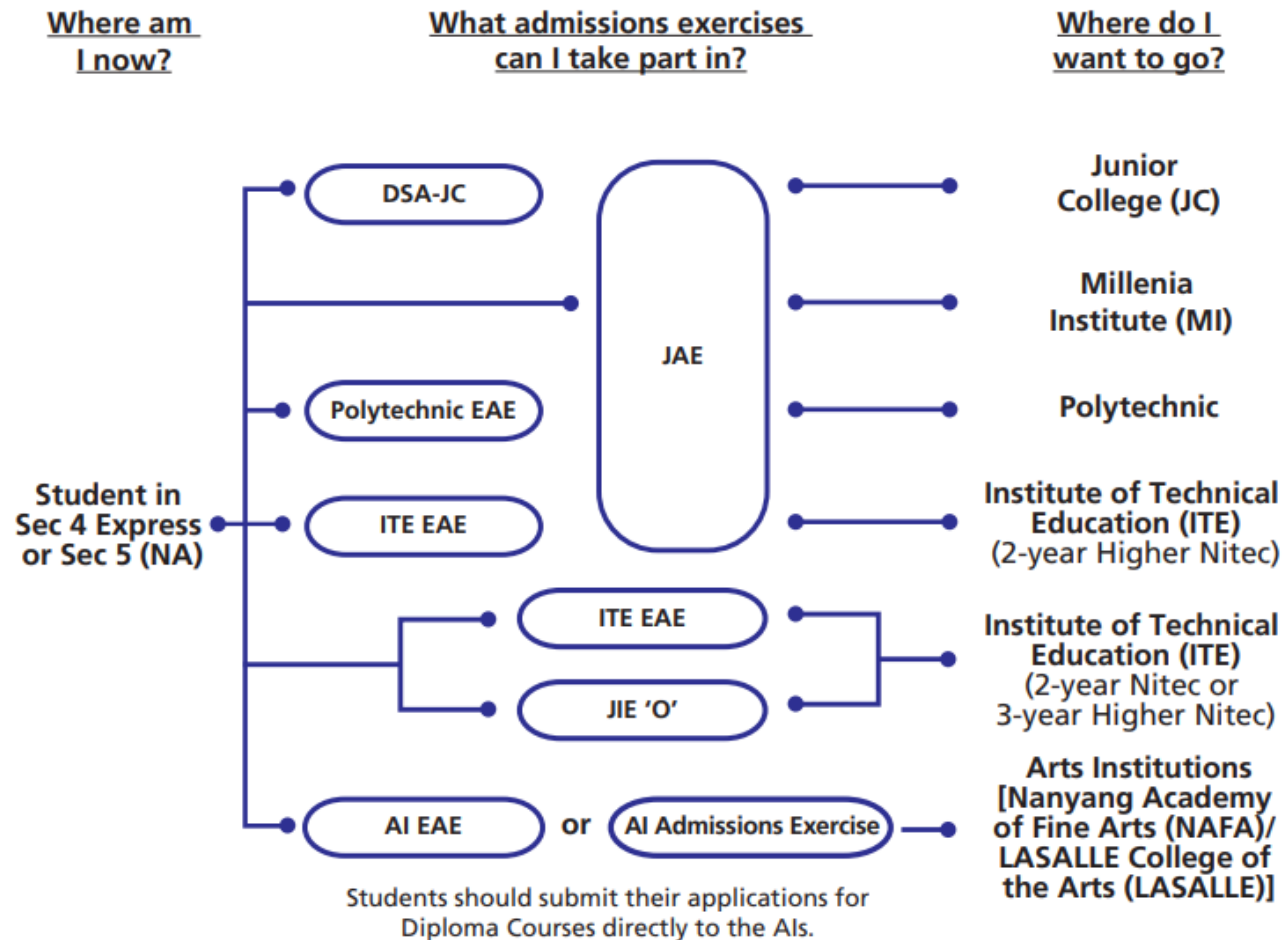
eC2 is an e-Counselling Centre where you can talk to a trained counsellor about the issues you are facing, right where you are.

Chat with a counsellor at:

www.ec2.sg

*Monday – Friday (Excluding Public Holidays):
10am – 12pm & 2pm – 5pm*

Post-Secondary Admissions Exercises for O-Level Students



DSA: Direct School Admission
JAE: Joint Admissions Exercise
AI: Arts Institution

EAE: Early Admissions Exercise
JIE: Joint Intake Exercise

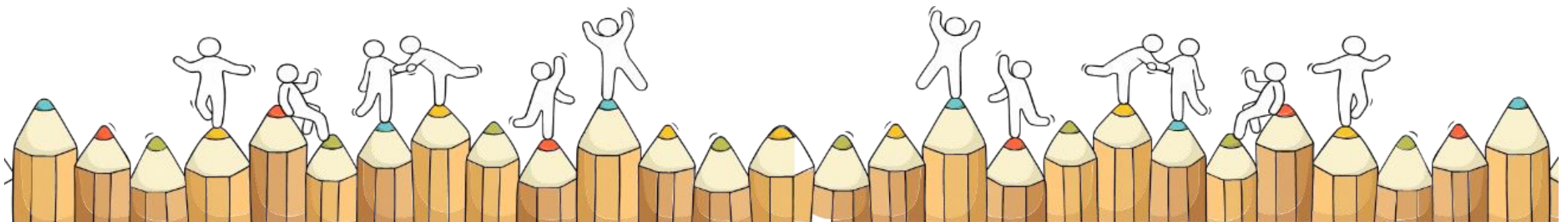
Learn more about the
**post-secondary education
institutions**



<https://www.moe.gov.sg/post-secondary/admissions>

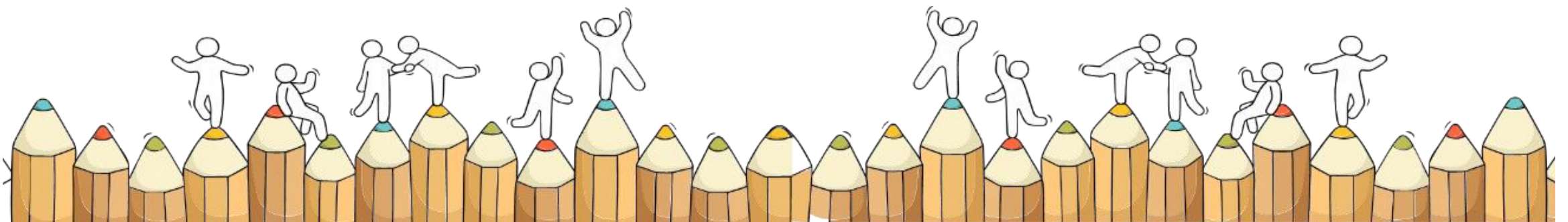
Application Timeline

Admissions Exercises	LASALLE NAFA	JAE JIE 'O'
Application Period	Starts Oct 2025	Jan 2026



You should be receiving:

- **GCE O-Level result slip and certificate**
- **Form A (digital)**
 - registered email address (3pm onwards on 14 Jan 2026)
 - JAE Internet System (JAE-IS) (Singpass)(during application period)

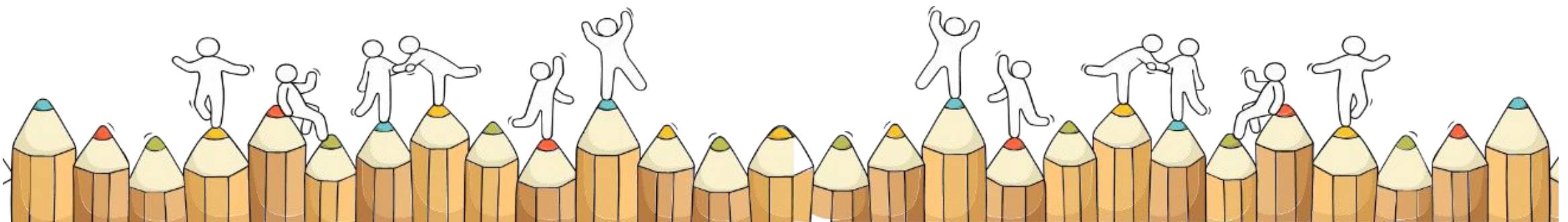


Form A

contains:

- your GCE O-Level Examination results
- Gross aggregate scores for JC/MI/Polytechnic/ITE aggregate type
- Courses you are eligible to apply in the JAE

Receive email on your eligibility to participate in JAE



When choosing...

IMPORTANT

- Strongly encouraged to use the [JAE Worksheet](http://www.moe.gov.sg/jaeworksheet) (www.moe.gov.sg/jaeworksheet) before submitting online application
- Consider your choices wisely based on merit according to net aggregate score
- [Make full use of all 12 choices](#)
- List them in order of preference in your application.
- refer to the [full listing of 2026 JAE courses](#)
- Appeal for JC: need to meet COP of JC course for the year

Resources



[SchoolFinder \(JCs and MI\)](http://www.go.gov.sg/sf-jcml)

www.go.gov.sg/sf-jcml



[CourseFinder \(Polytechnics and ITE\)](http://www.go.gov.sg/cf)

www.go.gov.sg/cf



[JAE worksheet](http://www.moe.gov.sg/jaeworksheet)

www.moe.gov.sg/jaeworksheet



[Education & Career Guidance resources](http://www.moe.gov.sg/ecgoverview)

www.moe.gov.sg/ecgoverview

Bonus Points

Types	Number of bonus points
CCA grade Excellent A1 or A2	2
CCA grade Good B3 to C6	1
English and Higher Mother Tongue Language grade A1 to C6	2
Chinese or Malay (Special Programmes) or Bahasa Indonesia grade A1 to C6	2

Max of 4 bonus points



Joint Admission Exercise (JAE)

Receive	digital Form A
Apply	<ul style="list-style-type: none">Registered email address (Wednesday, 14 Jan 2026, 3pm)<u>JAE-IS website</u> (JAE Internet System) (www.moe.gov.sg/jae) using SingPass (Wed, 14 Jan 2026 – Mon, 19 Jan 2026)
Application phase	4pm on Wed, 14 Jan 2026 to 4.30pm on Mon, 19 Jan 2026
<u>Points to Note</u> during Application	You are strongly encouraged to use JAE worksheet <u>before</u> submitting your online application.
	<ul style="list-style-type: none">JAE website for more details on the JAE (www.moe.gov.sg/jae)SchoolFinder for details of the offerings by and previous entry score ranges for JCs and MI (www.moe.gov.sg/schoolfinder)CourseFinder for courses offered by the polytechnics and ITE, based on aggregate type and area of interest (www.moe.gov.sg/coursefinder)

Release & Appeal of JAE posting results

Application Outcome	<ul style="list-style-type: none"> • 9am on Tue, 3 Feb 2026 • SMS (local mobile number in application) • JAE-IS (using Singpass)
Appeal	<ul style="list-style-type: none"> • Appeals are evaluated on a case-by-case basis by the institutions • Must <u>meet both the minimum entry requirement</u> of the course and the <u>net aggregate score</u> of the lowest-ranked applicant posted to the course <p>JC/MI: Visit school website to find out about appeal process and timeline</p> <p>Polytechnic/ ITE: Check appeal submission timeline and submit through JAE Online Appeal Portal (9am on Tues, 3 Feb 2026 to 4pm on Fri, 6 Feb 2026.)</p>
Appeal Outcome	<p>While waiting for the outcome, you should still report to the institution you are posted to.</p> <p>JC/MI: Refer to the school websites to find out when and how the appeal outcome will be released.</p> <p>Polytechnics/ ITE: 9am on Mon, 23 Feb 2026 by email and SMS to log in and view your appeal outcome in the portal</p>

Candidates successful in JAE posting

Posted to JC/MI	<p>Reporting date: Wed, 4 Feb 2026</p> <p>If students are unable to report to their posted JC or MI on 4 Feb, due to valid reasons, they may contact their posted school directly to confirm that they are taking up the place, and the school will be able to reserve the place for them.</p>
Posted to Polytechnic / ITE	<p>If you are posted to a polytechnic course, applicants will receive an email with enrolment details by end Feb 2026.</p> <p>If you are posted to an ITE course, applicants will receive an email with enrolment instructions by Tues, 3 Feb 2026.</p>

Direct School Admission (DSA)- Junior College

- Students who had accepted offers through the 2025 Direct School Admission – Junior Colleges (DSA-JC) will be admitted to their chosen JC if they have met the eligibility criteria for admission based on their GCE O-Level examination results.
- Students admitted to a JC through DSA-JC will not be eligible to participate in the JAE.
- **Students who do not meet the JC admission criteria may take part in the JAE** to apply for courses which they are eligible for.
- More details on DSA-JC can be found at www.moe.gov.sg/dsa-jc.

Early Admission Exercise (EAE) - Polytechnic

- Students who had **accepted conditional offers** to a polytechnic course through the Polytechnic EAE in 2025 and have their offers confirmed based on their GCE O-Level examination results will not be eligible to participate in the JAE.

Their EAE offers are confirmed if they meet the following criteria:

- A net ELR2B2 score of 26 points or better for the GCE O-Level examinations; **and**
- Minimum Entry Requirements for the respective polytechnic course.

- **Students who do not meet the above criteria may take part in the JAE.**
- More details on Polytechnic EAE can be found at <https://eae.polytechnic.edu.sg>

Early Admission Exercise (EAE) - ITE

- Students who had **accepted conditional offers** to an ITE course through the ITE EAE in 2025 and have their offers confirmed based on their GCE O-Level examination results will **not be eligible to participate in the JAE.**
- Their EAE offers are confirmed if they meet the subject-specific minimum entry requirements for the course.
- More details on ITE EAE can be found at www.ite.edu.sg/admissions/full-time-courses/highernitec/eae/.

Polytechnic Foundation Programme (PFP)

(Obtained a raw ELMAB3 aggregate of **12** points or lower and meet subject-specific requirement.

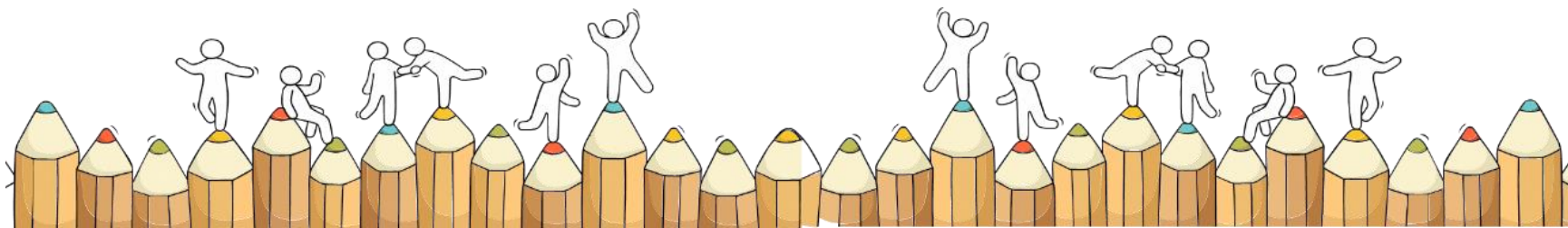
1-Yr practice-orientated curriculum at Poly, selected Poly diploma courses, subjected to passing all modules in the 1-Yr programme)

For
4N OOS

Withdraw from Sec 5	only after you have accepted the PFP offer Attend Sec 5 classes till Fri, 30 Jan 2026
Application for PFP	14 Jan 1.30pm to 19 Jan 2026 4.30pm
Receive	<u>Form P</u> (contain unique password)
Apply	Log in to: PFPAE Portal (PFP Joint Admissions Exercise)
Application outcome	<ul style="list-style-type: none">PFP application results will be through the PFPAE portal (26 Jan 2026, 1.30pm)Accept, reject or appeal for change of course by 29 Jan 2026Respective polytechnics will inform on the enrolment dates for the PFP.
<ul style="list-style-type: none">Being eligible for PFP does not guarantee placement into a PFP course.	

For 4N students who are interested in PFP now

- Students who have **accepted a place in the earlier application phase of the DPP** in Dec but decide to take up a PFP offer now **must withdraw** from the DPP **first** before taking up the PFP offer.
- DPP-enrolled students should check with ITE class advisor for more details on the DPP withdrawal process and deadlines for withdrawal.
- You can **only accept either** PFP or DPP, if you accept both offers will have **both offers voided**.

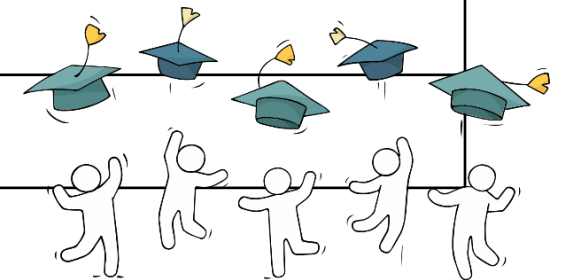


Direct-Entry-Scheme to Poly Programme (DPP)

(Obtained a raw ELMAB3 aggregate of **19** points or lower and meet subject-specific requirement.
Selected 2-Yr Higher Nitec at ITE mapped to Poly diploma programme)

For
4N OOS

Receive	Form N for eligible candidates
Apply	Apply at DPP application portal with SingPass
2 nd Phase Application phase	14 Jan 2026 to 19 Jan 2026
Application outcome / Appeal	9am on 21 Jan 2026 (tentative) Accept or reject DPP offer by 26 Jan 2026 To check posting results through DPP application portal (https://www.ite.edu.sg/apply-for-ITE-courses)
Progress to ITE	Accept DPP: Report to ITE on 26 Jan 2026

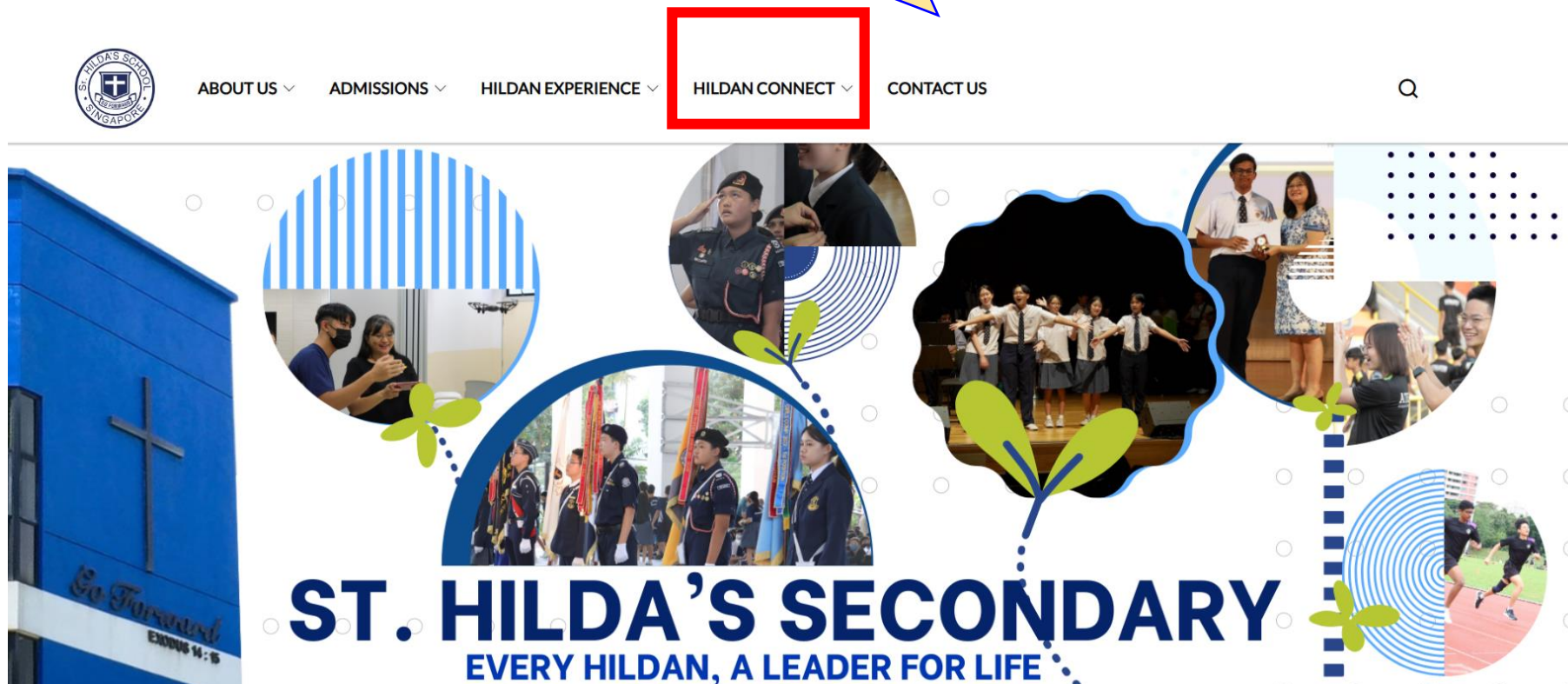
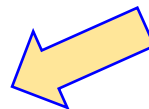


SUPPORT FROM SCHOOL



Information on ECG Counselling, JC Open House and Art Institutions

You can access the links from
Hildan Connect – For Students



Appeal for Review of Results

Closing Date	By <u>Mon, 19 Jan 2026</u>
Application	Obtain Form from General Office (Mdm Nurlena/ Mdm Goh) and complete it duly
Appeal Outcome	Release through school – <u>Tue, 3 Mar 2026</u>
Appeal Fee	\$125.00 / subject

Once you receive your certificate,

- Check personal particulars.
- If there is an error in your name due to misspelling, immediately alert Mdm Tan Yin Leng TODAY.
- You will need to pay an administrative fee of \$50 for amendments on each O-Level certificate.

Scan the QR code to book an appointment with the ECG counsellor

Dates and details	
Online via MS Teams	14 - 19 Jan 2026 (Link to be sent via email upon booking confirmation)
Email	chia_yee_teng@moe.edu.sg



<https://go.gov.sg/shssecgappt>

Principal's Time

In
Everything
give
Thanks...
1 Thessalonians 5:18

Giving Thanks

School leaders would like to express our deepest appreciation to

Parents

Form Teachers

Subject Teachers

Student Development Team

Staff

